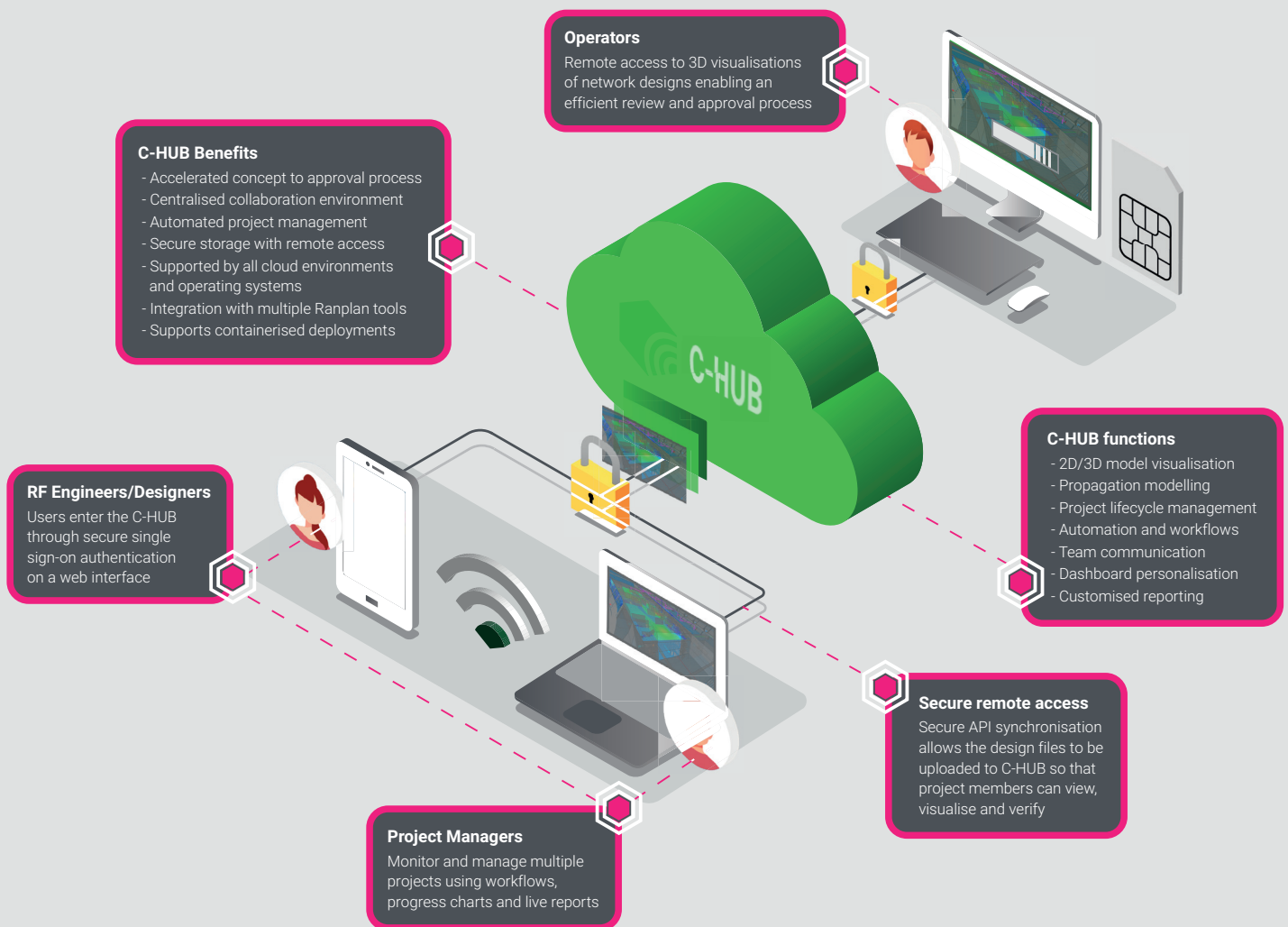


Ranplan Collaboration Hub

Cloud-based project management environment that enables the accelerated delivery of wireless networks



What is Ranplan Collaboration Hub?

Collaboration Hub (C-Hub) is a centralised cloud-based repository where users can securely share, retrieve and visualise network designs alongside project stakeholders. With workflow management, project auditing, 2D/3D network environment and propagation visualisation, C-HUB offers a virtual environment that fosters a holistic approach to complete network project lifecycle management.

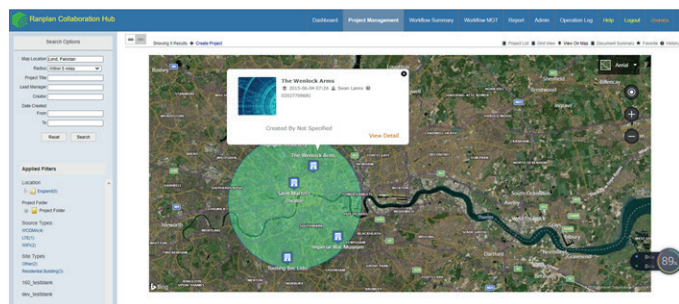
Key Benefits

- Accelerated project lifecycle management
- Define workflows for each network project
- High definition 3D project visualisation
- Secure cloud-based environment
- Customisable reports with live information

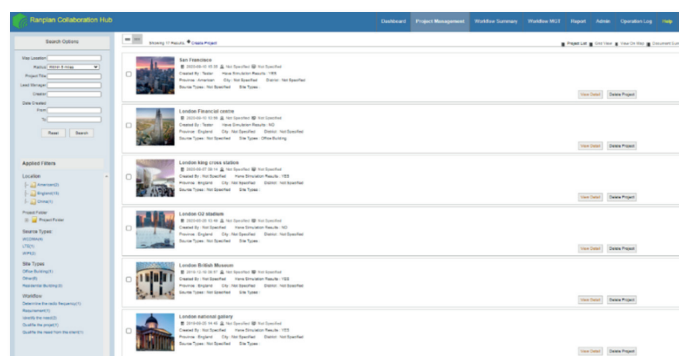
One centralised environment for network project management

Manage your network projects from inception to deployment, collaborating with internal and external stakeholders to work effectively as a team.

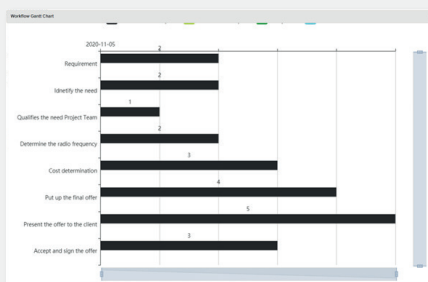
- Improve design efficiency using the large scale cloud-based environment to speed up the design review and approval process.
- Use the integrated audit module to check design projects are meeting KPIs and automatically validated prior to submission for approval.
- Seamlessly upload and download projects from Ranplan Professional, In-Building, In-Building Lite and Tablet.
- C-HUB backs up your network projects and allows you to download resources for offline use.



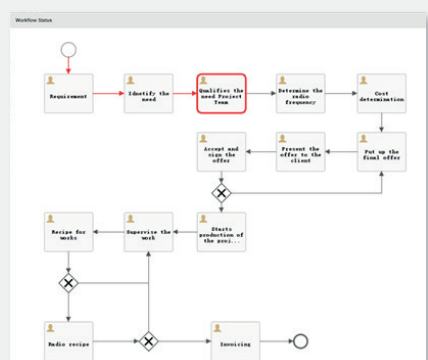
Projects map display



Projects list display



Workflow Gantt chart helps visualise project plans



Customisable workflows allow for greater automation

Task ID	Task Name	Status	Completion Date
1	San Francisco	Completed	2020-05-11 09:00:00
2	London King Cross station	Completed	2020-05-11 09:00:00
3	London Financial Centre	Completed	2020-05-11 09:00:00
4	London Bank of England	Completed	2020-05-11 09:00:00
5	London Bank of England	Completed	2020-05-11 09:00:00
6	London Bank of England	Completed	2020-05-11 09:00:00
7	London Bank of England	Completed	2020-05-11 09:00:00
8	London Bank of England	Completed	2020-05-11 09:00:00
9	London Bank of England	Completed	2020-05-11 09:00:00
10	London Bank of England	Completed	2020-05-11 09:00:00
11	London Bank of England	Completed	2020-05-11 09:00:00
12	London Bank of England	Completed	2020-05-11 09:00:00
13	London Bank of England	Completed	2020-05-11 09:00:00
14	London Bank of England	Completed	2020-05-11 09:00:00
15	London Bank of England	Completed	2020-05-11 09:00:00
16	London Bank of England	Completed	2020-05-11 09:00:00
17	London Bank of England	Completed	2020-05-11 09:00:00
18	London Bank of England	Completed	2020-05-11 09:00:00
19	London Bank of England	Completed	2020-05-11 09:00:00
20	London Bank of England	Completed	2020-05-11 09:00:00

Workflow summary

Automate network project management

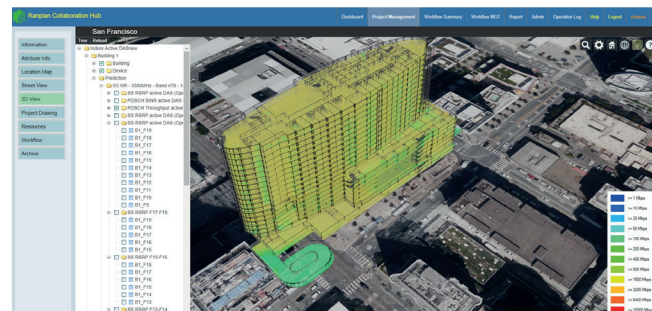
Network designs are complex and require many stages of development, plus a large team of experts all working together. The Collaboration Hub provides a centralised working environment for users to efficiently manage the delivery of projects, significantly reducing wasted time.

- Project Managers can plan tasks, track progress, manage team resources and receive notifications of events causing delays, all in one place.
- Project progress is visualised through Gantt charts and personalised dashboards.
- Manage a large team through automated notifications informing them of their tasks, responsibilities and priorities.
- Operators, System Integrators and OEMs can define workflows to support their project objectives.
- Maintain project governance by defining the optional and mandatory transition fields according to the defined workflow attributes, project extended attributes, and project core attribute.
- Efficiently validate network designs using the integrated audit module to check the network is being designed to meet set KPIs and specifications.

High definition network project visualisation

Gain accurate and realistic visualisation of how the network project will perform once deployed.

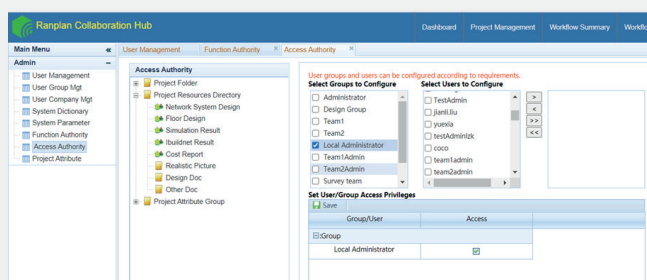
- Collaboratively review and verify network designs with high definition 2D and 3D in-building, urban outdoor and HetNet visualisations with geographical (geodata) information.
- Visualise predicted coverage and capacity performance inside buildings and dense urban environments with 2D and 3D heatmaps, enabling quick identification of network not-spots.
- Upload and organise your project visualisations created in the Ranplan software, providing easy access for other stakeholders to view online or download for offline use.



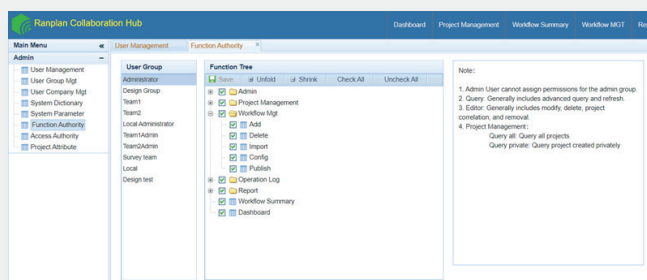
Realistic 3D visualisation of indoor coverage prediction



3D visualisation of indoor and outdoor network coverage



Access control



Function control

One secure environment

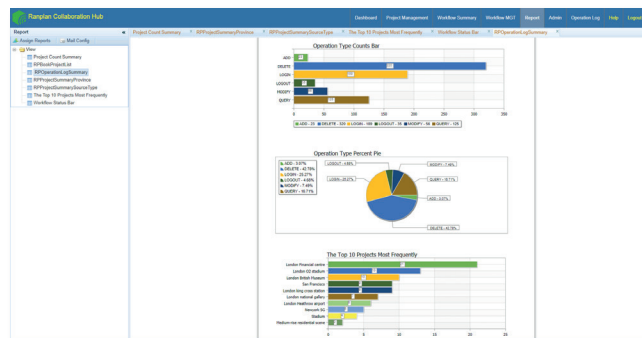
C-HUB offers users a central and secure environment in which multiple internal and external stakeholders can access, manage and visualise confidential network project information.

- Users access the C-HUB through a web interface with unique ID Single Sign On authentication via comprehensive REST APIs. On-demand project information from any device, any location, and anytime.
- Project managers act as administrators and have full control over accessibility permissions to files and project information. Administrators can define user accounts by individual user, user group and/or user company.
- The functional control feature can restrict users to certain functions and tasks are assigned according to their functional permissions.
- For further control, the Access Authority helps administrators define access to specific resources.

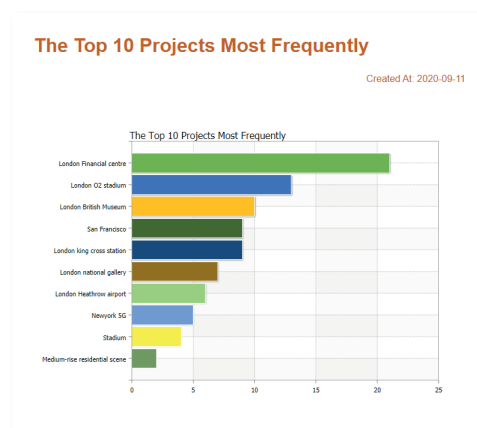
Instant actionable insight with on-demand, customisable reports

The Collaboration Hub removes the time-consuming task of manually generating reports by producing customised reports that populate with up-to-the-minute project information, straight from the platform.

- Managers can make better informed and timely decisions as well as communicate feedback to relevant team members.
- Gain instant insight into the operational status of a project from customised reports.
- Define report templates to suit different user groups' reporting needs.
- Users access reports through the dashboard based on permission set for their type of role or user group.



Report by source type



Most frequently accessed projects

Minimum server specifications

Processor: 2.0 GHz+, 4-core

Operating system: Windows Server 2016, Linux Redhat 7.2 onwards

Memory: 8GB RAM (64bit)

Recommended server specifications

Processor: 2.4 GHz+, 8-core

Operating system: Windows Server 2019, Linux Redhat 7.2 onwards

Memory: 32GB RAM (64bit)

About Ranplan Wireless

Ranplan Wireless pioneers software solutions that help perfect the design, optimisation and automation of in-building and urban outdoor wireless networks, either in isolation or in coordination.

Our solutions enable companies to deploy next generation wireless networks for a range of applications, supporting multiple technologies and providing an unmatched quality of experience.